

Get inspired by 

# About Fletco

Fletco Carpets A/S can look back on more than 70 years of development. It has led the business from the start as a small supplier of carpets to Danish consumers to the position of a supplier of carpets for the international residential and commercial market.

Fletco has roots in a regional, proud tradition of craftsmanship and industrial processing of textile products. This affiliation is important because it includes values of quality, diligence and precision. At the same time Fletco developed into a modern market and customer oriented company, where product development, technological re-thinking and efficient production are important keywords.

The future will mean stricter requirements for environmental awareness in production, and thus also in the final products. Fletco anticipated this development. The company's own laboratory ensures that the carpets fulfill requirements for internationally recognized certificates and tests, whilst also guaranteeing taking into account the demands of tomorrow.

Learn more at [www.fletco.com](http://www.fletco.com)

# Table of contents

4	Fine Line
6	Quattro
8	Højer Kontrakt® Original
10	Ex-Dono Metalweave
12	Corduroy
14	Uno
16	Chain
18	Duo
20	Ex-Dono Weave
22	Couture
24	Ex-Dono Megaweave
26	COM 1000
28	Nordic
30	Space
32	Zenith
34	Art Weave by Fletco®
40	Sebastian Wrong by Fletco®
46	Classic Weave
48	ZigZag-Tiles®
49	Thinking of the next generation
49	Interior Design and Acoustics

# Fine Line

Fine Line is a combination of the best within flat woven design carpets. The design has a tight woven structure and a low profile, and when mixed with a black and a light yarn vertical it creates a beautiful effect. Fine Line is approved for class 33.

Selected references:

**Novo Nordisk**  
Bagsværd, Denmark (Corporate)

**Spreepalais**  
Berlin, Germany (Corporate)

**MCEC Plenary Hall**  
Melbourne, Australia (Corporate)

**Sydbank**  
in several cities, Denmark (Corporate)

**Fußballstadion VfI**  
Hamburg, Germany (Corporate)

**Hana Bank WM Gangnam Center**  
Seoul, Korea (Corporate)

© Broadloom

100% PA 6.6 Invista  
Antron® Legacy™

Continue dyed

33 Commercial – heavy

Technical details



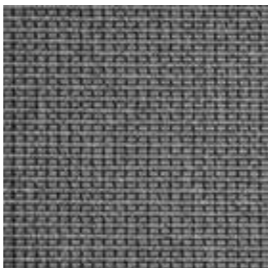
361120



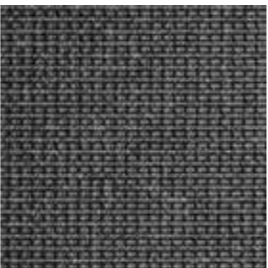
361220



361260



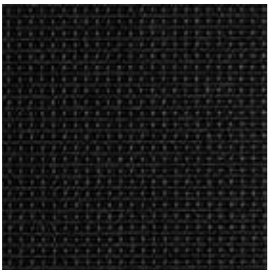
361300



361350



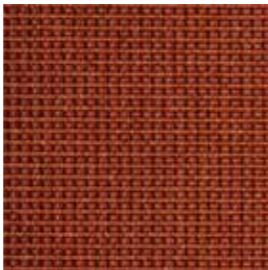
361380



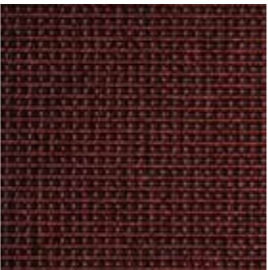
361390



361400



361600



361650



361700



361720



361770



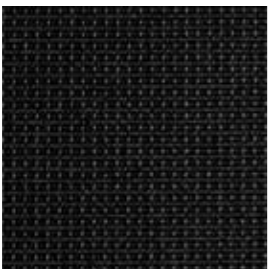
361800



361850



361870



361890



# Quattro

Flat woven manufacturing is not just low profile weaving, with Quattro we display some of the more complex designs that are also possible with our machines. Quattro is suitable for extra heavy commercial use, and has a high weaving structure and is available in 12 standard colours.

Selected reference:

**National Library of Lithuania**  
Vilnius, Lithuania (Public Buildings)

© Broadloom

100% PA 6.6 Ascend Ultron®

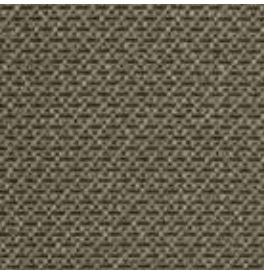
Continue dyed

33 Commercial – heavy

[Technical details](#)



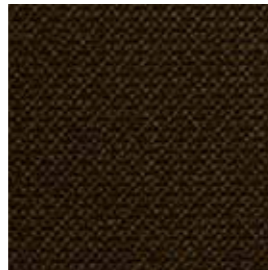
Quattro - col. 350



396100



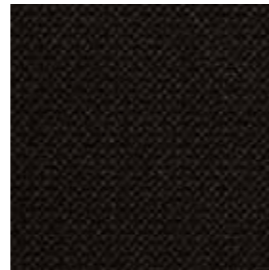
396150



396240



396250



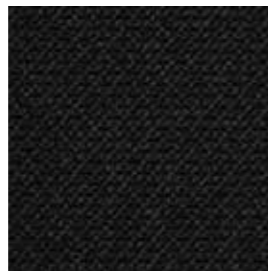
396280



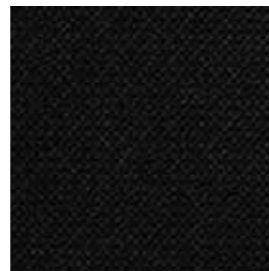
396300



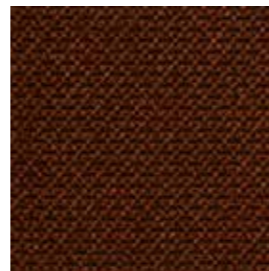
396350



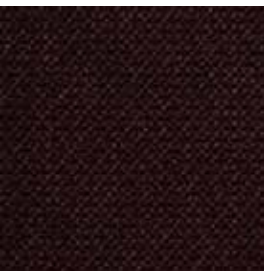
396380



396390



396480



396680



396740



Quattro - col. 480

# Højer Kontrakt® Original



The original conceived wool carpet has been produced since 1899, and is available in 12 different colours. The carpet is suitable for extra heavy commercial use, and is available as broadloom in 400 cm width.

Selected references:

**A.P. Møller Mærsk Headquarter**  
Copenhagen, Denmark (Corporate)

**Unilever**  
Rotterdam, Netherlands (Corporate)

**Haus der Wirtschaft**  
Berlin, Germany (Public Buildings)

**Novozymes**  
Bagsværd, Denmark (Corporate)

**IKEA of Schweden**  
Älmhult, Sweden (Corporate)

**Dulles International Airport**  
Washington, USA (Corporate)

© Broadloom

80% pure new wool  
20% polyamide

33 Commercial – heavy

Technical details



510210



510230



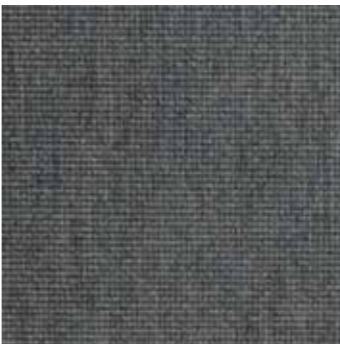
510250



510280



511100



511300



511350



510620



510680



510720



511390



511370

# Ex-Dono Metalweave

As the name indicates, our broadloom Ex-Dono-Metalweave has the appearance of a medium tight woven structure, but with a metallic coloured thread horizontal woven into its design. This gives the carpet an extraordinary look, and the design fits perfectly into an office area.

Selected references:

**Handelsbanken**  
Ikast, Denmark (Corporate)

**Silesian University of Technol**  
Technol, Poland (Public Buildings)

**Pinsenhof**  
Den Haag, Netherlands (Hotel)

**Ericpol**  
Krakow, Poland (Corporate)

**BVH Competence Center**  
Koblenz, Germany (Corporate)

© Broadloom

100% PA 6.6 Invista Antron®  
Legacy™

Continue dyed

33 Commercial – heavy

Technical details



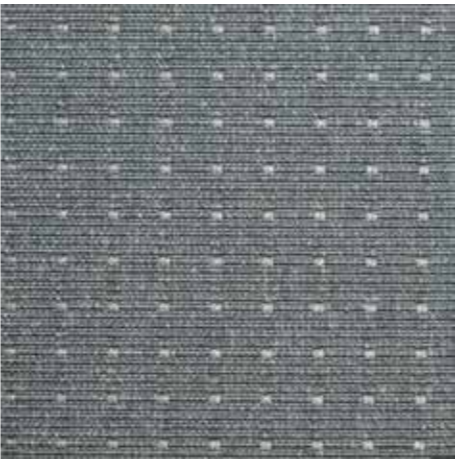
Ex-Dono Metalweave - col. 390



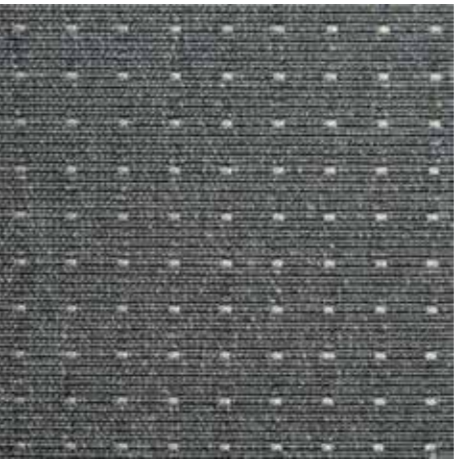
Ex-Dono Metalweave - col. 390



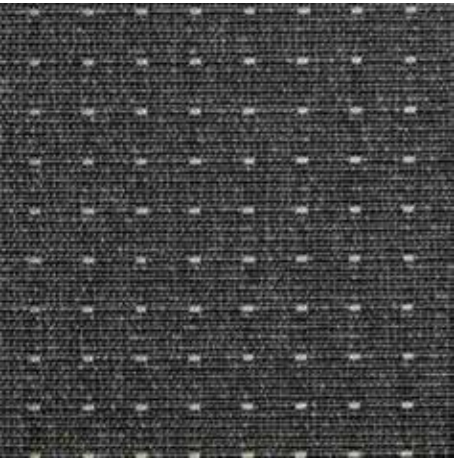
356200



356300



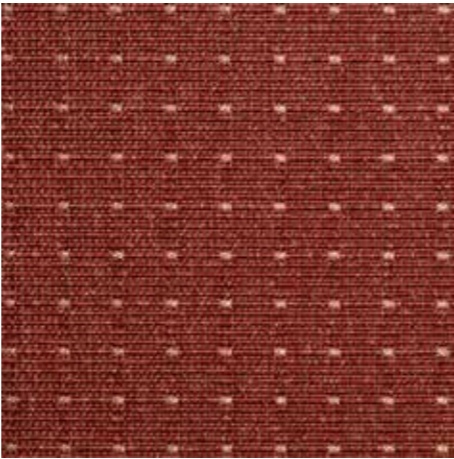
356330



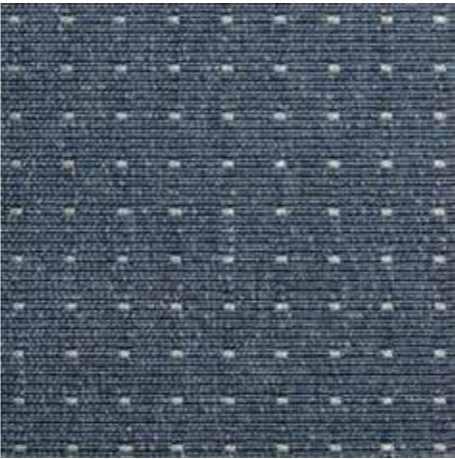
356360



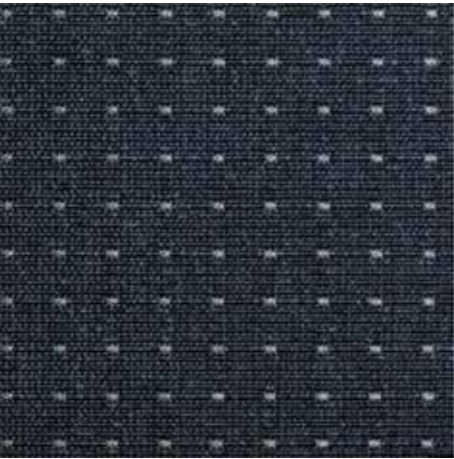
356390



356600



356800



356880

# Corduroy

The product is a classic within flat woven design, it displays how easily a minor change in structure can create a unique effect to the end design of a room. In Corduroy, we used Invista yarn combined with a high/low weaving structure and the result is perfect.

Selected references:

**H&M Head Office**  
Stockholm, Sweden (Corporate)

**Fußballstadion VfL VW Arena**  
Wolfsburg, Germany (Corporate)

**Helly Hansen AS**  
Moss, Norway (Corporate)

**ASE**  
Frederiksberg, Denmark (Corporate)

**Red Bull**  
Salzburg, Austria (Corporate)

**Sheraton Hotel of D-cube city**  
Seoul, Korea (Hotel)

© Broadloom

100% PA 6.6 Invista  
Antron® Legacy™

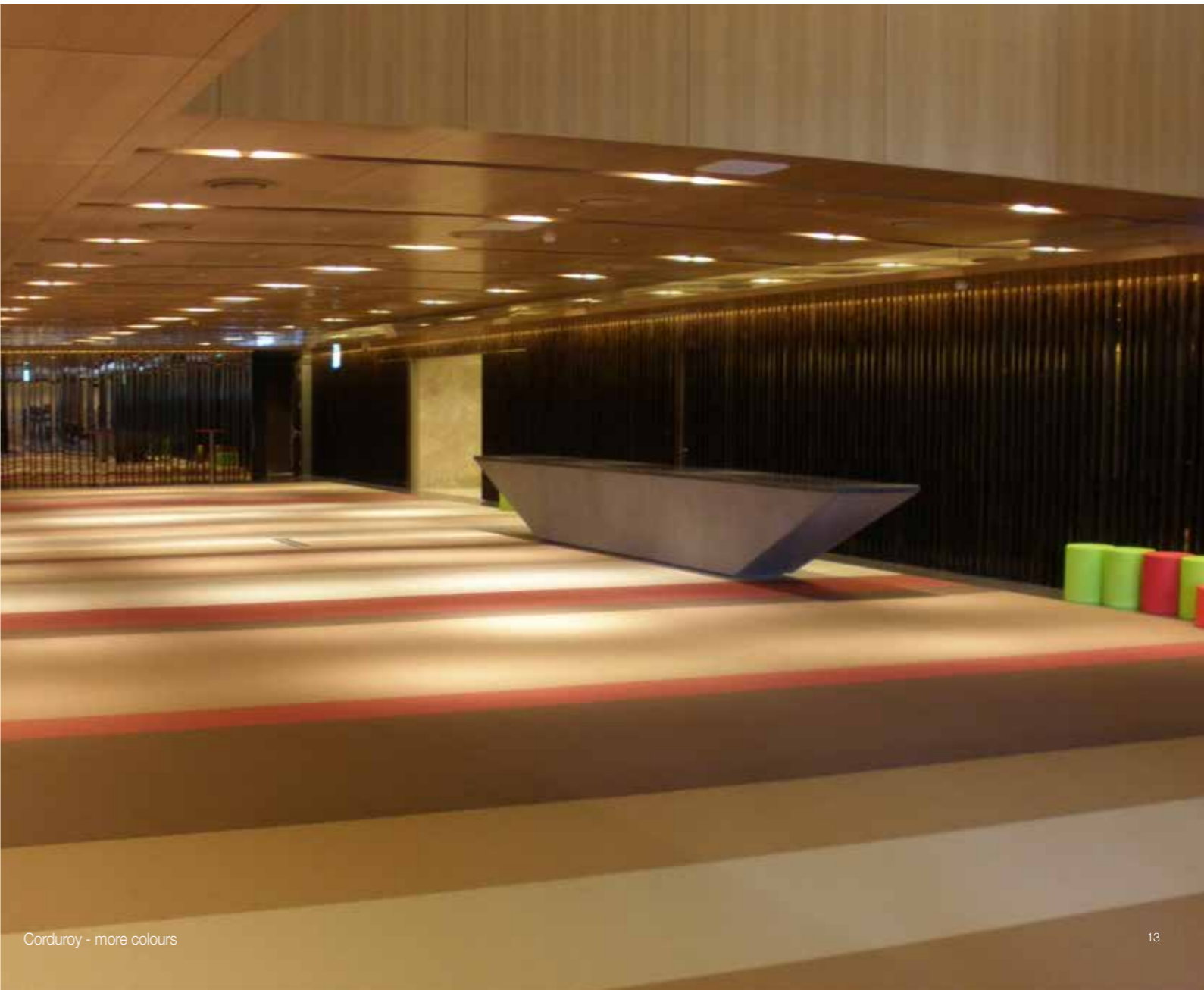
Continue dyed

33 Commercial – heavy

Technical details



Corduroy - col. 350



Corduroy - more colours

# Uno

We are not afraid of colours!  
Uno was developed on the premise that simple structure, combined with extraordinary colours, will give the architects the tools to create the perfect environment for the end-user. We offer 37 colours from stock and it is made with Ultron Nylon 6.6, which ensures strong and vivid colours. Uno is approved for extra heavy commercial use.

Selected references:

**Siemens**  
Vejle, Denmark (Corporate)

**Freie Universität**  
Berlin, Germany (Public Buildings)

© Broadloom

100% PA 6.6 Ascend Ultron®

Continue dyed

33 Commercial – heavy

Technical details



# Chain

Chain is one of the newest in our product range, its innovative design and heavier weaving structure makes it differentiate from most of our other products. The product is available in 12 colours from stock, and it is made with Invista Antron yarn.

© Broadloom

100% PA 6.6 Invista  
Antron® Legacy™

Continue dyed

33 Commercial – heavy

Technical details



349120



349160



349270



349360



349370



349470



349300



349330



349350



349670



349770



349850

# Duo

Duo originated from the same principles as Uno, simple design but with multiple colours available from stock. We offer 37 colours from stock in a simple, yet classic, flat woven design.

Selected references:

**Deutsche Bahn Projekt GmbH**  
Duisburg, Germany (Corporate)

**Newmor Polska**  
Warsaw, Poland (Corporate)

© Broadloom

100% PA 6.6 Ascend Ultron®

Continue dyed

33 Commercial – heavy

[Technical details](#)



# Ex-Dono Weave

The classic design of a flat woven product, it derives from many years of experience with flat woven carpets. It has a medium-tight weaving structure combined with the classic nylon 6.6 yarn in 17 colors from Invista.

Selected references:

**Hanwha Group of Galleria Art Center**  
Chean-An, Korea (Corporate)

**GE Health Care AS**  
Oslo, Norway (Corporate)

**Sydbank**  
Aabenraa, Denmark (Corporate)

**Ericpol**  
Warsaw, Poland (Corporate)

**Flughafen Bremen**  
Bremen, Germany (Corporate)

**Bausparkasse Bratislava**  
Bratislava, Slovakia (Corporate)

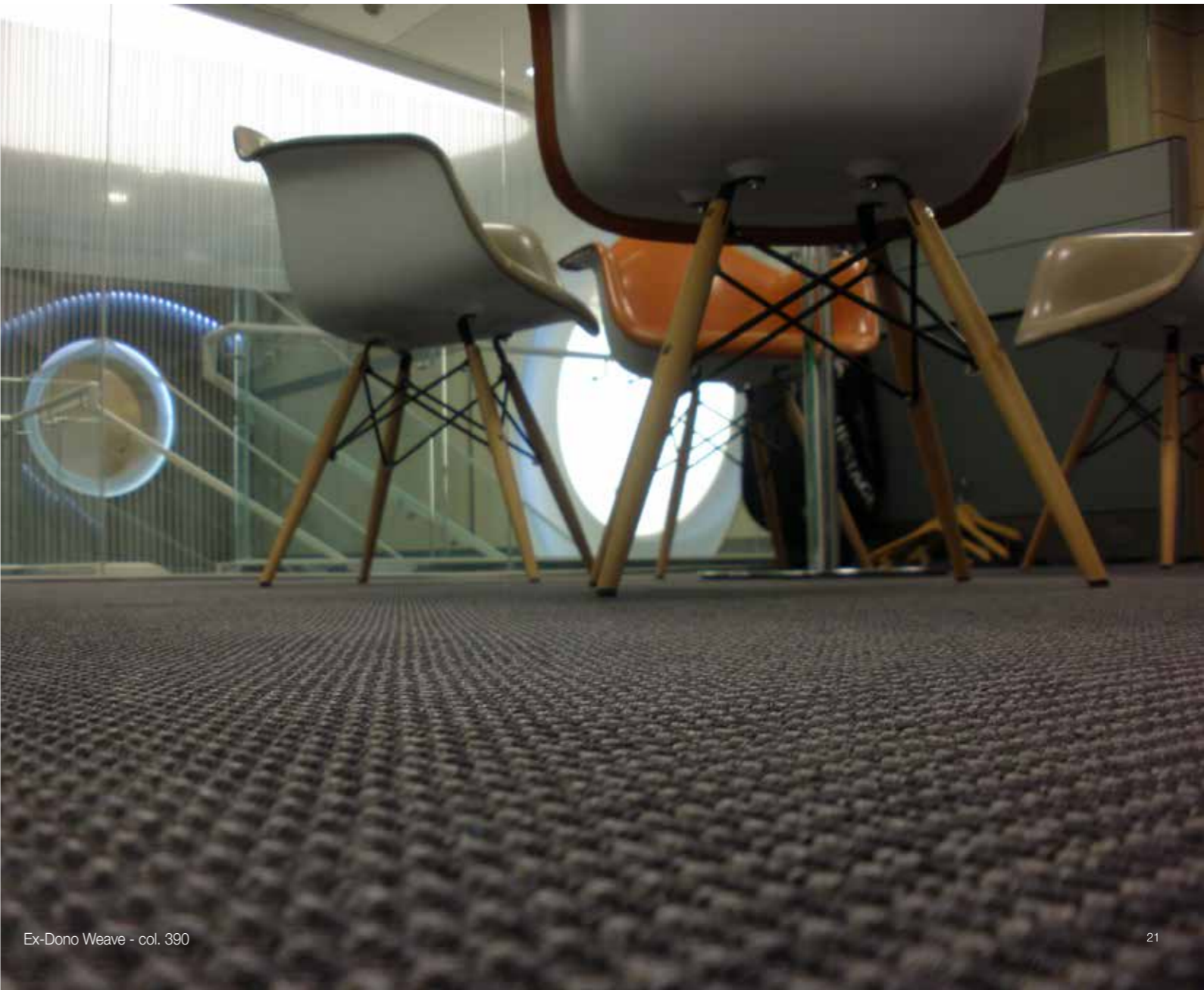
© Broadloom

100% PA 6.6 Invista  
Antron® Legacy™

Continue dyed

33 Commercial – heavy

Technical details



# Couture

The luxurious feeling of Couture is immense. We developed the product to satisfy the needs of a velvet carpet for class 32. The product comes with exceptional acoustic features, and in range of 16 colours from stock.

© Broadloom

100% PA 6.6  
Antron® Carpet fibre

Continue dyed

32 Commercial - general

[Technical details](#)



Couture - col. 050



Couture - col. 450



367050



367100



367150



367160



367350



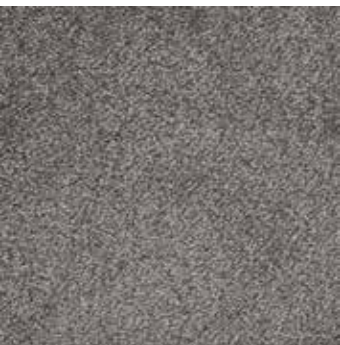
367390



367450



367600



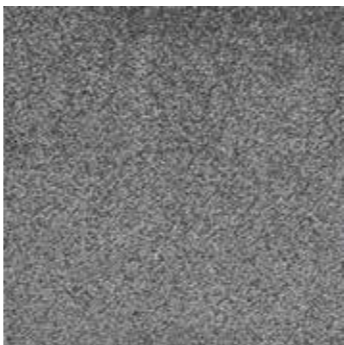
367200



367250



367280



367300



367630



367650



367780



367850

# Ex-Dono Megaweave

Ex-Dono Megaweave is a product that derives from the basics of Ex-dono Weave. The classic design of Ex-Dono Weave founds the premise of the added vertical stripe throughout the carpet in Megaweave. The effect of the vertical stripe is creating a modern look that draws attention.

Selected references:

**Stabiplan**  
Bodegraven, Netherlands (Corporate)

**Technologie-Zentrum**  
Flensburg, Germany (Public Buildings)

**Cultural Sport Center**  
Gliwice, Poland (Corporate)

**Filmbolaget Buena Vista**  
Stockholm, Sweden (Corporate)

© Broadloom

100% PA 6.6 Invista  
Antron® Legacy™

Continue dyed

33 Commercial – heavy

Technical details



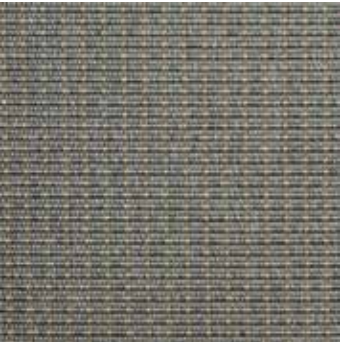
Ex-Dono Megaweave - col. 360



355100



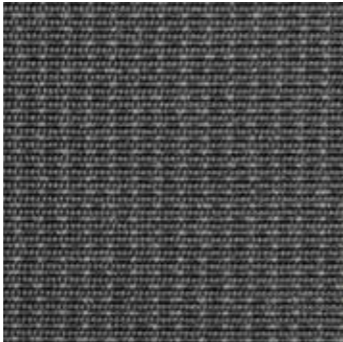
355280



355300



355330



355360



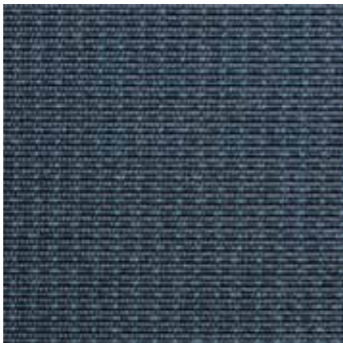
355390



355600



355800



355840



355880



Ex-Dono Megaweave - col. 360



Ex-Dono Megaweave - col. 360

# COM 1000

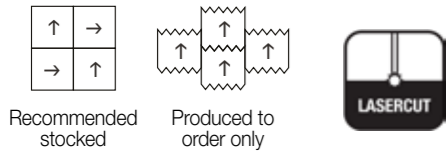
The flat woven quality COM 1000 combines comfort and quality, and is suitable for extra heavy commercial use. The quality is available in 10 different colours and can be delivered as both broadloom and carpet tiles.

Selected references:

**NRE Group A/S**  
Ikast, Denmark (Corporate)

**Novo Nordisk**  
Kalundborg, Denmark (Corporate)

Installation:



© ■ Broadloom and tiles

100% PA 6.0

Solution dyed

33 Commercial – heavy

[Technical details – broadloom](#)

[Technical details – tiles](#)



328160 / T328160



328220 / T328220



328260 / T328260



328300 / T328300



328330 / T328330



328350 / T328350



328370 / T328370



328390 / T328390



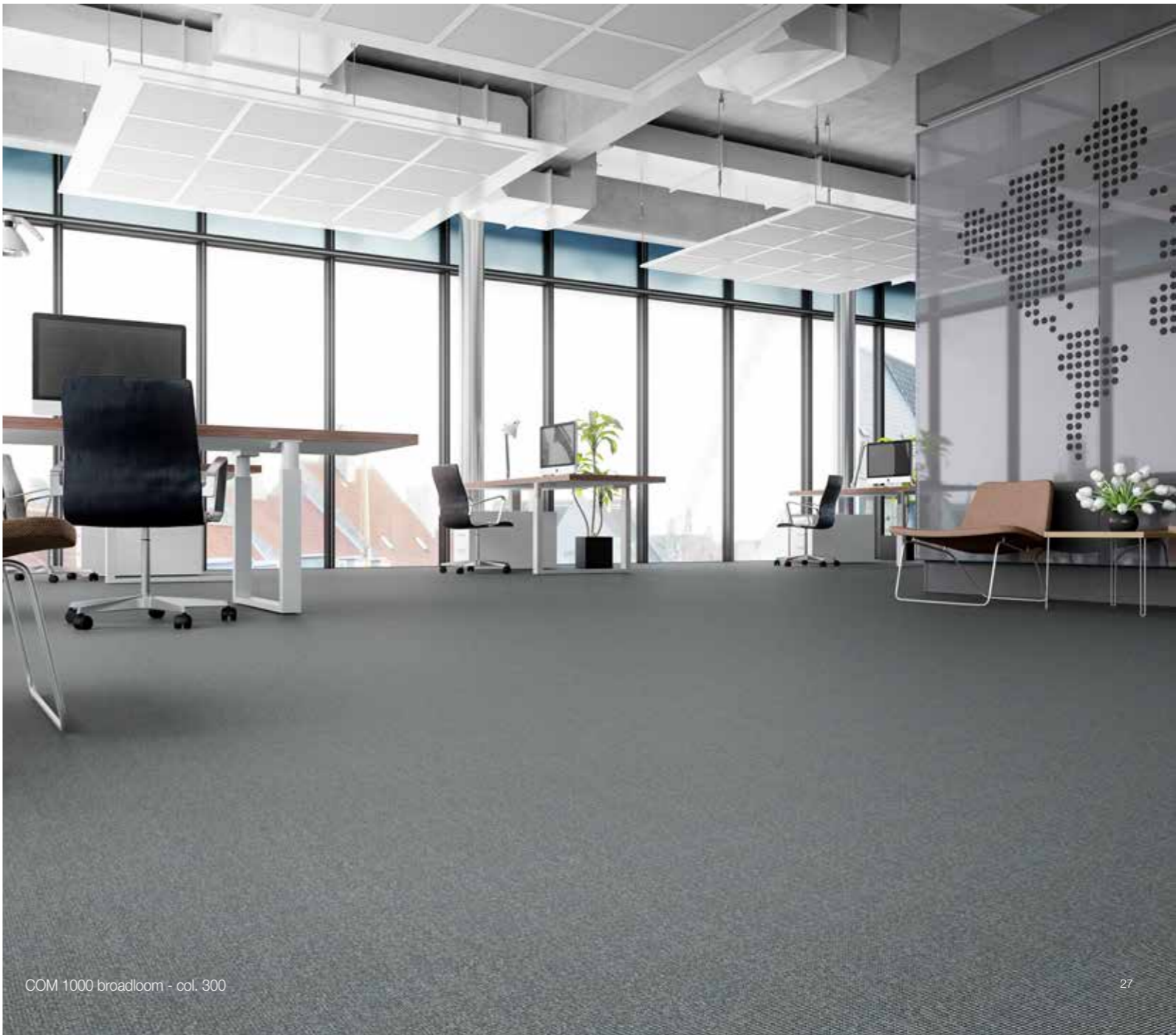
328650 / T328650



328850 / T328850



COM 1000 broadloom - col. 160



COM 1000 broadloom - col. 300

# Nordic



Nordic is one of the classics we developed in both broadloom and tiles. Its signature is simplicity in the weaving structure, and combined with its 18 colours from stock, Nordic will cover most enquiries. Nordic is suitable for extra heavy commercial use.

### Selected references:

**Sony Center**  
Berlin, Germany (Corporate)

**Sparekassen Sjælland**  
Køge, Denmark (Corporate)

**MCH**  
Herning, Denmark (Corporate)

**Potsdam Institut für  
Klimafolgenforschung**  
Potsdam, Germany (Corporate)

**ČSOB Bank**  
several cities, Czech Republic  
(Corporate)

© Broadloom and tiles

100% PA 6.6 Ascend Ultron®

Continue dyed

33 Commercial – heavy

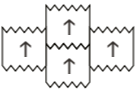
[Technical details – broadloom](#)

[Technical details – tiles](#)

### Installation:



Recommended  
stocked



Produced to  
order only



Nordic ZigZag-Tiles® - col. 250



394100 / T394100



394120 / T394120



394150 / T394150



394200 / T394200



394220 / T394220



394340 / T394340



394350 / T394350



394360 / T394360



394390 / T394390



394395 / T394395



394240 / T394240



394250 / T394250



394290 / T394290



394300 / T394300



394320 / T394320



394600 / T394600



394680 / T394680



394890 / T394890

# Space

The flat woven quality Space combines comfort and quality, and is suitable for extra heavy commercial use. The quality is available in 8 different colours, and can be delivered as both broadloom and carpet tiles.

©  Broadloom and tiles

100% PA 6.0 Aqualon

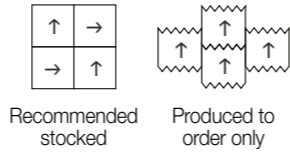
Continue dyed

33 Commercial – heavy

[Technical details – broadloom](#)

[Technical details – tiles](#)

**Installation:**



Space broadloom - col. 350



326250 / T326250



326350 / T326350



326380 / T326380



326400 / T326400



326600 / T326600



326700 / T326700



326720 / T326720



326800 / T326800



Space tiles - col. 250



Space tiles - col. 800

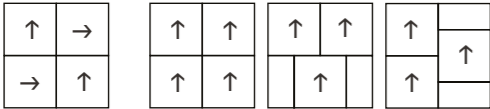
# Zenith

The tufted quality Zenith provides a soft look, but is a hard-wearing carpet with exceptional acoustics features. Zenith is suitable for extra heavy commercial use, and can be delivered as both broadloom and tiles. You'll find Zenith in 18 great colours.

Selected references:

- KMC**  
Brande, Denmark (Corporate)
- Marimex**  
Kraków, Poland (Corporate)
- Univé**  
Amsterdam, Netherlands (Corporate)
- Citroën**  
Aalborg, Denmark (Corporate)
- McLaren**  
Woking, England (Corporate)

Installation:



Recommended

© Broadloom and tiles

100% PA 6.6 Invista  
Antron® Brilliance™

Continue dyed

33 Commercial – heavy

[Technical details – broadloom](#)

[Technical details – tiles](#)



Zenith - more colours



371150



371210 / T371210



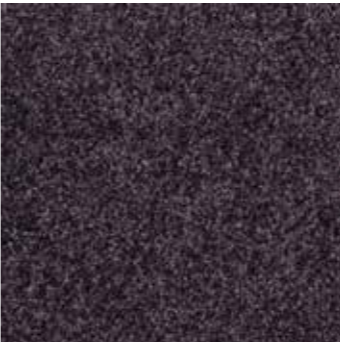
T371220



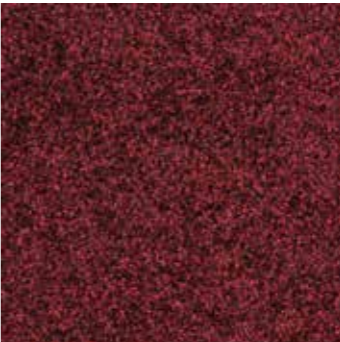
371260 / T371260



371600 / T371600



371650 / T371650



371680 / T371680



371740 / T371740



371280 / T371280



371330 / T371330



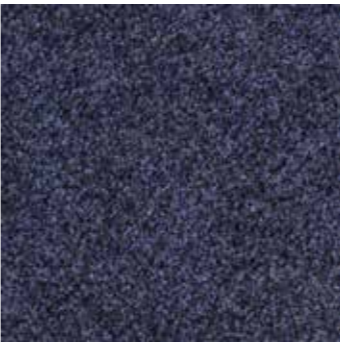
371350 / T371350



371380 / T371380



371800 / T371800



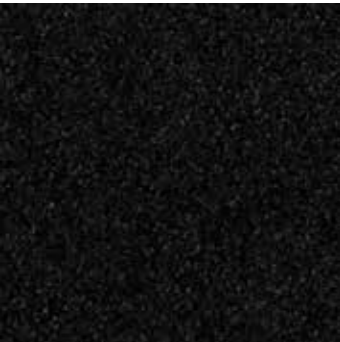
371850 / T371850



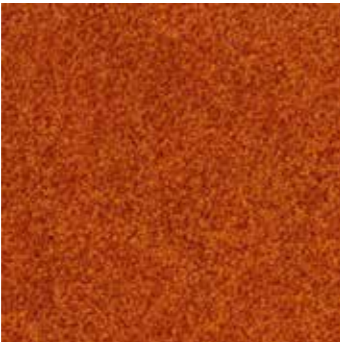
371870 / T371870



371880 / T371880



371390 / T371390



371480 / T371480

# Art Weave by Fletco®

## ART WEAVE - the concept

Art Weave is created from a vision of bringing art literally down at floor level. A desire to create a different life on the floor. The design of Art Weave is inspired by the unique structures in different materials, which are interwoven into a living, organic, and graphic direction.

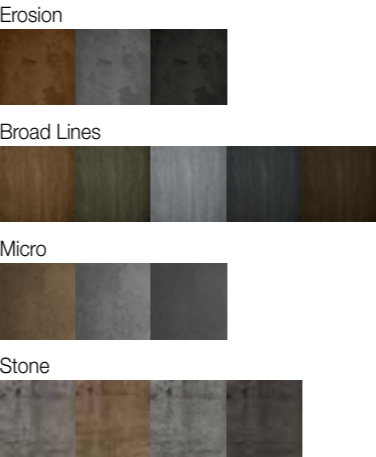
### Select master tile

The artistic expression comes automatically when selecting Art Weave tiles. Select 1 of the 4 master tiles. Select the design which fits to your project.



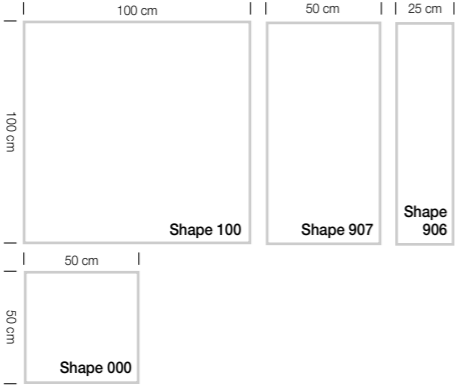
### Select colour

Whether you stick to one colour or play with different colours, you can create unique flooring solutions in all environments.



### Select shape

Art Weave is made in 4 different shapes, which are laser cut out of a large master tile. Select shape(s).



### Place randomly

To ensure a living, graphical and almost collage-like effect the pieces are not numbered. It is part of the design that the tiles are laid randomly.



Laser cut for  
highest precision

Erosion

Broad Lines

Micro

Stone

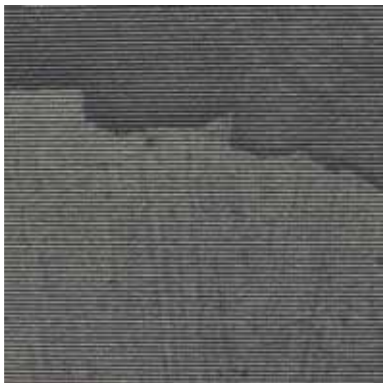
# Art Weave – Erosion



Erosion - col. 320 in shape 100 + 907



T800001250



T800001300



T800001320

- Tiles: 4 different shapes
- 100% PET Anvire FR®
- Print
- 33 Commercial – heavy
- Technical details

# Art Weave – Broad Lines



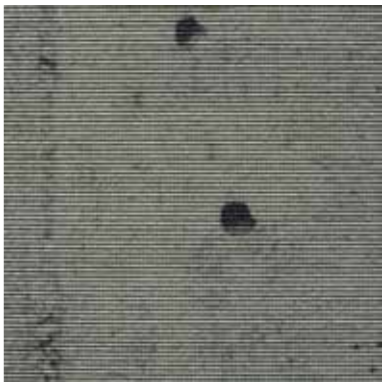
Broad Lines - col. 300 + 350 in shape 906 + 907



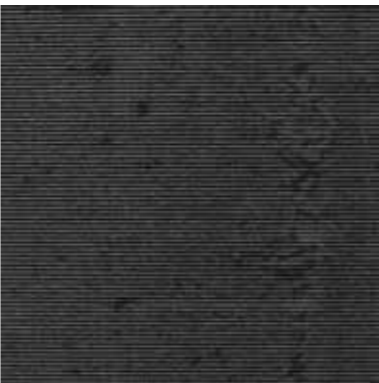
T800009150



T800009170



T800009300



T800009350



T800009450

Selected references with Art Weave:

**Intal**  
Opmeer, Netherlands (Corporate)

**Kreissparkasse Nordhorn**  
Nordhorn, Germany (Corporate)

**Schaller Uto AG**  
Lyss, Switzerland (Corporate)

**DigiCure**  
Virum, Denmark (Corporate)

**BRT Treuhand AG**  
Burgdorg, Switzerland (Corporate)

# Art Weave – Micro



Micro - col. 200 in shape 907



T800006200



T800006300



T800006380

# Art Weave – Stone



Stone - col. 320 in shape 000



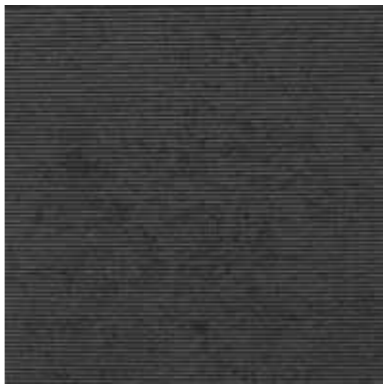
T800002150



T800002250



T800002300



T800002320



Stone - col. 300 in shape 000

# Sebastian Wrong by Fletco®

This colourful and imaginative carpet tiles concept gives our clients freedom to design a unique flooring solution to match their individual project perfectly, creating interesting effects within the specific context of the space and other interiors in the building.

The concept was developed from the idea of using an endless pallet of colours combined with a selection of geometric shapes that can connect and interlock to make many possibilities.

There are 18 attractive colours available and 9 different tile shapes.

Tiles: 9 different shapes

100% PA 6.6 Ascend Ultron®

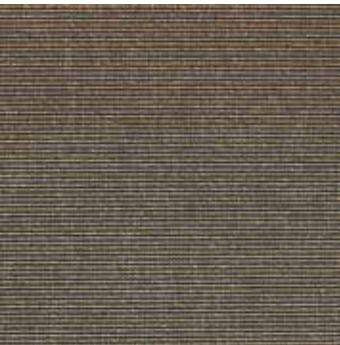
Continue dyed

33 Commercial – heavy

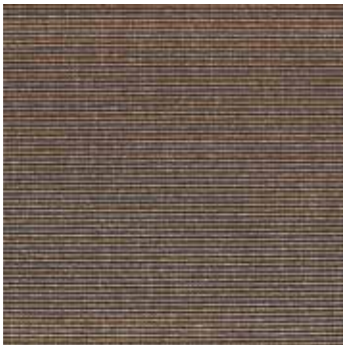
Technical details



Sebastian Wrong by Fletco - col. 240 + 290 in shape 905, col. 120 +340 in shape 000 and col. 260 in shape 910.



T850001120



T850001160



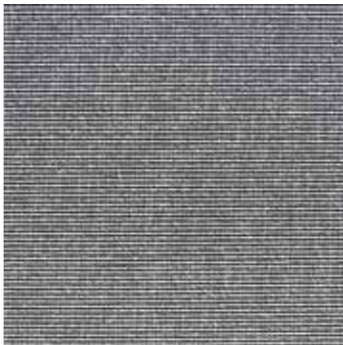
T850001240



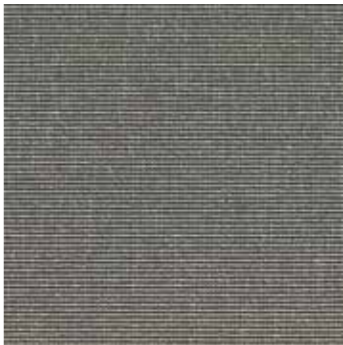
T850001260



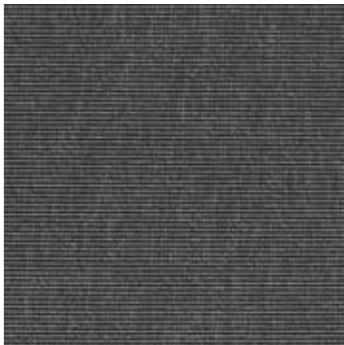
T850001290



T850001300



T850001340



T850001350



Sebastian Wrong by Fletco at Scott & Weber Office Center s.r.o - five colours in the shapes 905 + 000 + 910.

# Sebastian Wrong by Fletco®

Selected references:

**Comwell**  
Aarhus, Denmark (Hotel)

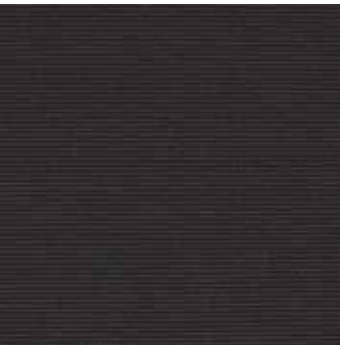
**Scott & Weber Office Center s.r.o**  
Prague, Czech Republic (Corporate)

**Playtech**  
Tallinn, Estonia (Corporate)

**Rabobank**  
Zaltbommel (Amsterdam), Netherlands (Corporate)



Sebastian Wrong by Fletco - col. 300 + 340 + 350 + 380 + 390 in shape 904



T850001380



T850001390



T850001500



T850001650



T850001740



T850001750



Sebastian Wrong by Fletco at Playtech - five colours in the shape 905.



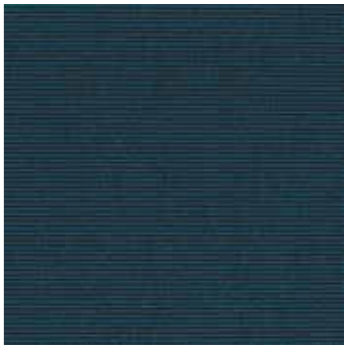
T850001770



T850001820



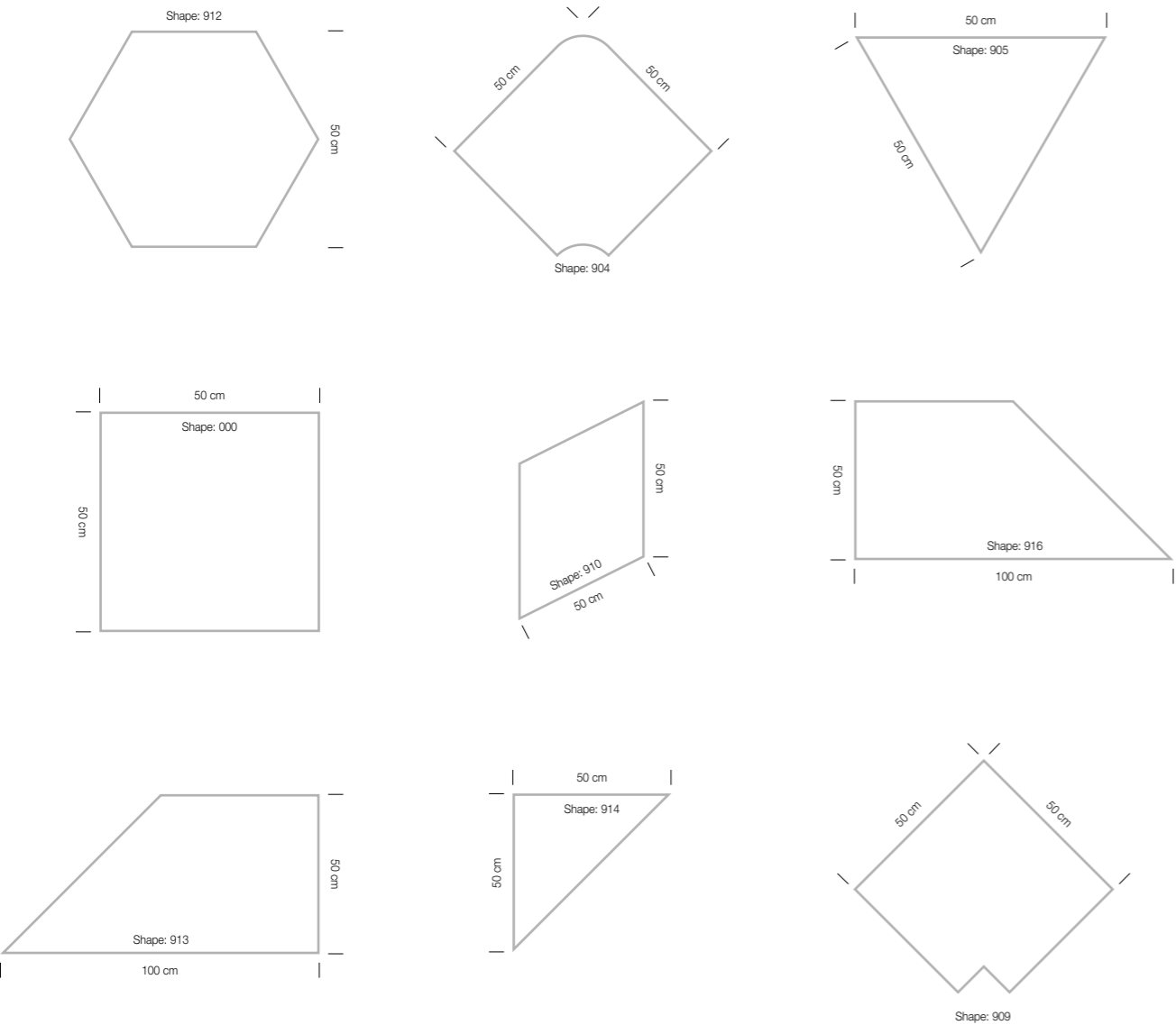
T850001850



T850001860

# Sebastian Wrong by Fletco®

## – Shapes



# Sebastian Wrong by Fletco®

## – Colours

### Colours and families

Sebastian Wrong by Fletco is available in 18 different colours divided into five categories or families. Some colours appear in more than one family.

Principles for Product Codes (example):

Article: T850 001  
Colour: 380  
Shape: 904

Colours are representative and may vary from the actual product.

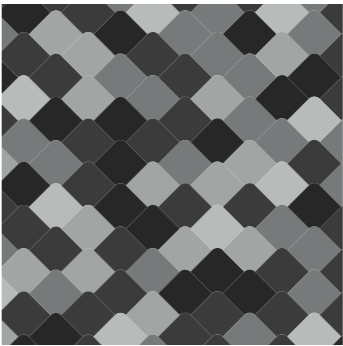


Laser cut for highest precision

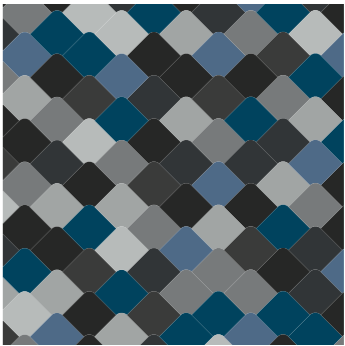
### Examples of colour combinations

Please see below, the colour combinations made of either a single family or more families. Our colour families are only recommendations, you are of course free to choose the colours you want.

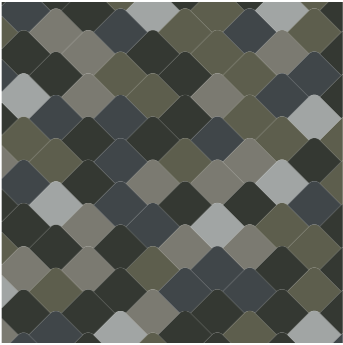
Family C1



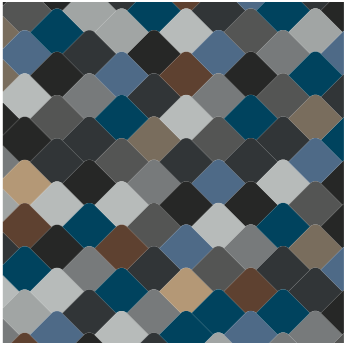
Families C1 & C2



Family C5



Families C1, C2 & C3



# Classic Weave

Classic Weave is unique, as it is our only stable fiber product within tiles. The colours appear more subtle and exclusive, as they have a wool-look. We offer Classic Weave in 17 colours.

Selected references:

**Rabobank Oost Betuwe**  
Elst, Netherlands (Corporate)

**PricewaterhouseCoopers**  
Tromsø, Norway (Corporate)

**Commerz Bank**  
Dubai, United Arab Emirates (Corporate)

**Velfac Huset**  
Horsens, Denmark (Corporate)

**Eye Level**  
Prague, Czech Republic (Corporate)

**Audi Shop**  
Ingolstadt, Germany (Corporate)



Classic Weave - col. 400



T750200



T750250



T750300



T750330



T750350



T750380



T750390



T750400

Tiles

100% PA 6.6 Ascend Ultron®

Continue dyed

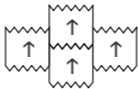
33 Commercial – heavy

Technical details

Installation:



Recommended stocked



Produced to order only



T750100



Classic Weave - col. 800



T750500



T750600



T750650



T750680



T750700



T750750



T750800



T750850

# ZigZag-Tiles®

## Carpet tiles, which look like a broadloom

The new ZigZag tile shape for our flat woven carpet tiles has been developed for our customers, who want flat woven carpet tiles and simultaneously want the look of a broadloom. Normally we always recommend that flat woven carpet tiles are installed in quarter-turn, but this does not give the effect of a fitted carpet.

When selecting our new ZigZag-Tiles®, our flat woven tiles can then be installed in the same direction: the tile bond of the tiles should be displayed by half a tile in the length direction, which means that a better homogeneous surface is achieved, the joints are less visible and the effect of a broadloom is obtained.

The advantages of the ZigZag-Tiles®:

- The tiles can be installed in same direction, thus an effect of a broadloom is obtained with minimal visible joints.
- Single tiles can easily be replaced, if for example liquid has been spilled on a tile.
- The quality is the same as our other flat woven carpet qualities.
- The tiles and the edges are laser cut, which guarantees a perfect fit and helps prevent fraying.

ZigZag-Tiles® are available in the size 50 x 50 cm and can be delivered in the following classic collections (produced to order only):

- Nordic
- Classic Weave
- COM 1000
- Space

## Winner of several design awards



Nordic in ZigZag-Tiles® - col. 250

# Thinking of the next generation

## Creating carpets in a sustainable process

Fletco focuses on environmental issues in all our manufacturing processes, from cradle to cradle. Sustainability is key to all our product development. We lead the field and meet or surpass the authorities' official or certifying bodies' carpet manufacturing requirements. Wherever possible, we will engage in research and development into new methods and materials.

### Fletco carpet tiles with TEXtiles® backing

One particular environmental problem that applies to carpet tiles generally is the backing, which traditionally contained PVC or bitumen. Thanks to new production technology, the backing of all Fletco carpet tiles is guaranteed free of these and other harmful chemical substances:

- Cradle-to-cradle and CO<sub>2</sub> reduction
- Backing made of minimum 60% recycled materials
- Eco-friendly – cradle-to-cradle – suitable for thermal disposal
- Ecological product – free of bitumen, PVC and other environmentally-critical substances
- Produced using CO<sub>2</sub> neutral energy (steam) and 100% wind energy
- Odour-neutral
- Permanently antistatic
- Fletco TEXtiles® are GUI approved “allergy-friendly”



# Interior Design and Acoustics

Noise reduction is becoming an important issue in interior design in both office buildings and in the hospitality sector. It is all about creating rooms and areas not only for the eyes, but for the ears as well.

A serious approach to acoustics is of great importance for creating a comfortable environment for work, meetings, entertainment and relaxation.

It is a proven fact that poor acoustics leads to workplace dissatisfaction and has a direct impact on employee performance and physical well-being. Noise can cause both stress and frustration in office buildings and institutions - and when it comes to hospitality and entertainment, unwanted noise will have a negative effect on the overall experience.

Carpeting is one of the main tools to minimize unwanted noise - and Fletco will help you create rooms and spaces with a pleasant acoustics for working and experience.

